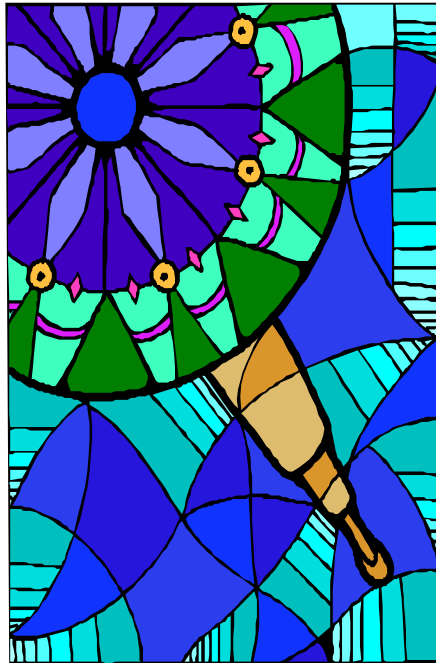


GI KALEIDOSCOPE 2009



Presented by
**Minnesota Regional Society
of Gastroenterology
Nurses and Associates**

October 10-11, 2009



**Minneapolis Airport Marriott
2020 American Blvd East
Bloomington, MN 55425
952-854-7441
www.Marriott.com/mspmn**

WWW.MNSGNA.COM

Who Should Attend

This conference is designed for Gastroenterology Nurses, Associates and other health care professionals who provide care for patients with GI disorders.

Purpose

Diseases of the GI tract affect millions of Americans annually. The expertise of Gastroenterology Nurses and Associates is valued by patients. Patients requiring endoscopy and non-endoscopy encounters for diagnostic and therapeutic interventions rely on that expertise and knowledge for information, care, and support.

The purpose/goals of this conference are to increase the participants knowledge of topics related to innovation in GI procedural care, to identify approaches to chronic diseases along with changing perspectives of patient's experience according to their wishes, and to become knowledgeable in ways to contain costs, increase efficiency, improve the flow and budgets within the Endoscopy/GI department. Chronic colon and rectal maladies will be discussed along with nutritional benefits of fiber on these issues. In addition, participants will learn how to become aware of dreams, synchronicities surrounding death in order to better understand death's reminders for life and living.

Benefits

MnSGNA's annual educational course is sponsored by and intended for Gastroenterology Nurses and Associates & will provide clinically relevant information to all health care professionals about various disorders of the GI tract.

Credits

This seminar has been designed to meet the specifications of the Minnesota Nurse Practice Act of Continuing Education requirements for 11.5 contact hours 10.0 GI specific. This educational activity has been submitted to the Society of Gastroenterology Nurses and Associates, Inc. for approval. The Society of Gastroenterology Nurses and Associates, Inc. is accredited as an approver of continuing education in nursing by the American Nurses Credentialing Centers Commission of Accreditation. Participation and successful completion will be verified by self-reported attendance and a return evaluation tool.

MnSGNA Members

An open Board Meeting will be held on Friday, October 9th at 8PM at the Minneapolis Airport Marriott. All members are welcome.

Course Objectives

Conference participants will be able to:

- Describe the most recent advances in video capsule endoscopy and experience a live video demonstration.
- Explain the benefits of the Lean Process and develop techniques applicable to the Endoscopy/GI Unit.
- Identify patient preferences and perceptions regarding the endoscopy experience.
- Identify changes in the treatment for Eosinophilic Esophagitis.
- Discuss new management options and educational needs for hepatitis patients.
- Describe components of endotherapy related to pancreatic disorders.
- Validate the understanding of our dreams, visions, and synchronicities surrounding death.
- Discuss current treatment options for hemorrhoids, fistulas, and fissures medically and nutritionally.
- Explain the pathophysiology of motility disorders.
- Summarize the health benefits of weight reduction surgery using Transoral gastroplasty.
- Explain the role of intestinal bacteria in the colon and new learn treatment options for difficult infections.

Prizes

Prize drawings will be held throughout the conference. You must be present & in the room to win! The grand prize drawing will be held at the completion of the course and is open to current MnSGNA members only.

Any departments wishing to contribute a basket or other item as a door prize are encouraged to do so. Label the item to identify the contributing department and bring it to the registration table.

Jane Bugbee RN, BSN, C
736 Continental Drive
New Brighton, MN 55112

Program Schedule

Saturday, October 10th 2009

7:00-8:00	Registration and Breakfast
8:00	Welcome and Announcements Jane Bugbee Fall Course Coordinator
8:00-9:00	Latest and Greatest on Capsule Endoscopy; Live Video Demo Steven Sanderson, MD
9:00-10:00	Lean Cost Containment-Scoping Out the Waste Quinn Kitchen-Miller, MPH
10:00-11:00	Charting the Course-Improving Your Patient's Experience at the Endoscopy Unit Craig Ott, BA, MBA
11:00-12:00	Eosinophilic Esophagitis-Asthma of the Esophagus Craig Solem, MD
12:00-1:30	Lunch and Vendors
1:30-2:30	Not Just Another Hepatitis Talk Jeffrey Albrecht, MD
2:30-3:30	Endotherapy of the Pancreas James B. Nelson, MD
3:30-5:00	Beyond Knowing--Mysteries and Messages of Life and Death Janis Amatuzio, MD

Sunday October 11th 2009

7:00-8:00	Breakfast
8:00-9:00	Hemorrhoids, Fistulas, Fissures, & Fiber David Willis, MD & Holly Willis, PhD
9:00-10:00	Moving It Along-Motility Rafael Andrade, MD
10:00-11:00	TOGA- Endoscopic Weight Reduction Surgery Sayeed Ikramuddin, MD
11:00-12:00	Stool Transplantation—What! Alex Khoruts, MD
12:00	Business meeting, closing remarks, and final prize drawings

Faculty

Jeffrey Albrecht, MD Gastroenterologist North Clinic Robbinsdale, MN	James B. Nelson, MD Gastroenterologist Minnesota Gastroenterology St Paul, MN
Janis Amatuzio, MD Forensic Pathologist, Medical Examiner, President-Midwest Forensic Pathology, P.A. Coon Rapids, MN	Craig Ott, BA, MBA District Manager- MN/ND/WI Procter and Gamble Pharmaceuticals Rosemount, MN
Rafael Andrade, MD Thoracic and Foregut Surgeon University of Minnesota Minneapolis, MN	Steven Sanderson, MD Gastroenterologist North Clinic Robbinsdale, MN
Sayeed Ikramuddin, MD Bariatric & Minimally Invasive Surgeon University of Minnesota Minneapolis, MN	Craig Solem, MD Gastroenterologist Park Nicollet Methodist Hospital St Louis Park, MN
Alex Khoruts, MD Gastroenterologist & Assistant Professor University of Minnesota Minneapolis, MN	David Willis, MD Colon & Rectal Surgeon Park Nicollet Methodist Hospital St Louis Park, MN
Quinn Kitchen-Miller, MPH Kaizen Specialist II Park Nicollet Health Services St Louis Park, MN	Holly Willis, PhD, MS, RD Nutrition Faculty Instructor University of Minnesota Minneapolis, MN

2009 Fall Planning Committee & Board Members

Jane Bugbee RN, BSN, C President-Elect Fall Course Coordinator	Debra Kjeldahl RN, BS, C
Kathleen Arnell RN, C	Cheryl Lindstrom RN, C President
Jill Bendiske-Minor RN, BSN, C Director	Lynn Mueller RN, BSN Secretary
Sandy Braun RN, BSN, C	Kathy Rozman-Holt RN, C Past President
Jill Casmey RN, C Treasurer	Georgia Schumacher LPN, C Director
Susan Clark RN, C	Sharon Yorde RN, BSN, C

Director

Conference and Hotel Accommodations

Minneapolis Airport Marriott

2020 American Boulevard East
Bloomington, MN 55425

Located off of 494 and 24th Avenue, right turn on to American Blvd East. Located across from the Mall of America.

A block of guestrooms have been reserved. Call the Hotel at 952-854-7441 to make your reservations. Single / double occupancy is \$94. Plus sales tax per night; mention MnSGNA when you call. Make reservation by September 18, 2009 to be assured of MnSGNA rates.

Syllabus

The syllabus will be in CD format to save trees. You are welcome to bring your own laptop to the conference, no electrical power source will be available.

For Your Comfort

Meeting room temperatures vary, so please dress accordingly.

Registration

For participants registration includes: tuition & CD of syllabus, Saturday registrants continental breakfast & lunch, AM & PM breaks & for two day registrants Sunday breakfast & break. (Breakfast service begins at 7 am)

In response to current economical conditions, Minnesota SGNA has decreased tuition costs by 20%.

Questions?

Contact Jane Bugbee, Course Coordinator
H-6541-633-7452
E-mail: Janebugbee@msn.com

GI Kaleidoscope

Registration Form
MnSGNA Annual Fall Course
October 10 & 11 2009

Please complete this enrollment form and send it with a check payable to MnSGNA to:

Lynn Mueller
6724 110th Ave. N.
Champlin, MN 55316

Name: _____

Address: _____

City: _____

State / Zip: _____

Telephone (include area code)

Home: (____) _____

Work: (____) _____

Email address _____

Employer: _____

SGNA Membership ID # _____

For a written confirmation, include a SASE.

Indicate which fees apply

Course Registration:

Both Days:	<input type="checkbox"/> Member	\$120 _____
	<input type="checkbox"/> Non-Member	\$160 _____
Saturday Only:	<input type="checkbox"/> Member	\$95 _____
	<input type="checkbox"/> Non-Member	\$125 _____
Sunday Only	<input type="checkbox"/> Member	\$80 _____
	<input type="checkbox"/> Non-Member	\$100 _____

Total Amount Enclosed: \$ _____

*Late registration fee after 9/18 – add \$20.00.
After October 1st there will be no refunds.*